

OCTOBER 2010

eATA e-bulletin



Chief Executive's Update

September has been and gone far too quickly but this seems to be an accurate reflection of the speed at which the new government are working to bring in the changes they want to see. I have spent half of this month representing eATA at various meetings. I was invited along by our partner DrugScope to present the treatment perspective at a consultation event on the drug strategy in Birmingham, and attended a meeting about tier 4 and the recovery agenda organised by Phoenix and Wirral DAAT.

There is a lot of talk about payment by results at the moment with policy-makers in government departments working up the proposals for how this is rolled out to the sector. In principle a move towards outcomes is very welcome and has the client's recovery at its heart. The system, however, if it is wrong could risk the survival of many providers who struggle to operate under a potentially less financially secure payment system. If you have any thoughts on the proposed changes please give me a call.

Looking forward to October I hope to see many of you at our national conference on October 13th in London where we will hear from Anne Milton MP, Minister for Public Health, NTA Chief Executive Paul Hayes, Professor David Best and many more. We will also find out the detail of where the cuts are to fall with the publication of the Comprehensive Spending Review in late October

Drug Strategy Submission 2010

eATA submitted a response to the Home Office Drug Strategy Consultation so a big thanks to all those who sent in their thoughts and concerns to help formulate the response. I am pleased to attach a summary of the submission for your information. This will inform the drug strategy due to be launched in December.



eATA Conference 13th Oct 'Aiming High for Drug and Alcohol Treatment' Book online at: www.pavpub.com

Proposed changes to the ESA (Employment Support Allowance)

After sending off our report to the DWP on the problems being experienced by members with the ESA, we had the following consultation brought to our attention. The report from the Social Security Advisory Committee is proposing to amend Regulation 25 to include clients who are in in-patient residential rehabilitation providers without medical staff on site under the eligibility of the ESA. This will hopefully clarify the position with local benefits offices that are currently reading the letter of the law and refusing this benefit to many clients. eATA submitted a response welcoming this amendment, suggesting expanding to include those who in a community treatment sector, and emphasising the importance of ensuring the guidance sent out to local offices is clear and understandable. To read more on this please [click here](#)

eATA e-bulletin

OCTOBER 2010

NTA Toolkit for Project Workers & Counsellors

The NTA have released a new toolkit for Project Workers and Counsellors. Node link mapping has been adapted to provide a unique visual picture of issues around a client's addiction. The toolkit provides detail on how to structure these maps with different shapes or 'nodes' representing examples such as; triggers, depressing actions, and decisions among others. This node link mapping was initially devised for students revising for exams and taking notes in lectures and has been found to be a valuable way to retain information and express thoughts. The information presented in a more visual way has been shown to stimulate the brain on a deeper level than linear notes or general conversations.

NLM (Node link mapping) can be used in many situations and in various formats such as white board, flip chart or paper and should be client led and flexible.

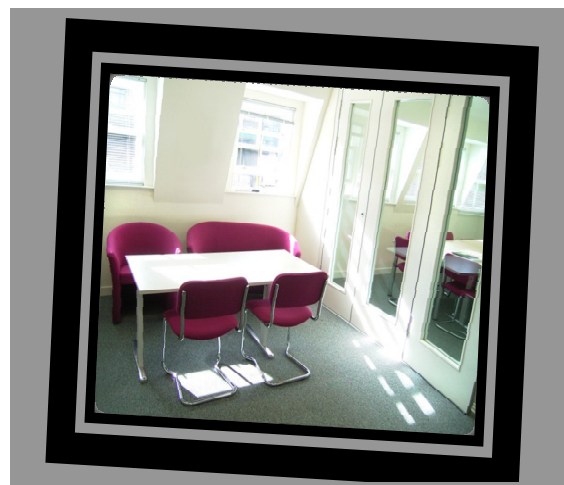
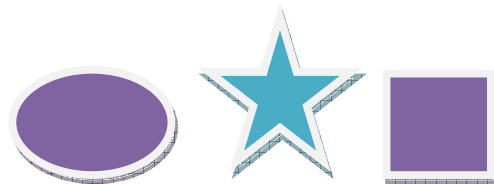
The tool kit goes on to describe effective counselling sessions have 4 key elements: 1. Communication, 2. Focus, 3. Production ideas, 4. Memory, and reveals how mapping can enhance counselling / talking therapies at all these levels.

Members – don't forget to ask us about the use of our meeting room in central London Location

As well as having various structures to the diagrams and various shapes for the boxes within them, the lines that link the boxes together should also have meaning, and the toolkit provides some examples that can be used to link the ideas and thoughts together, are 'leads to' 'next' 'influences' 'elaboration' such as when clients talk in detail about a particular issue or person.

The toolkit provides an example of a map and also a free style mapping sheet with a key to all the general node types and link types. This could easily be photocopied and handed out to project workers and clients. In addition a wide range of node link mapping are provided on the website www.ibr.tcu.edu The toolkit is available on the NTA website at:

<http://www.nta.nhs.uk/uploads/freemappingtoolkit2010.pdf>



eATA e-bulletin

OCTOBER 2010

Talking therapies - the Mental Health providers forum proposal

The mental health provider forum have released a proposal to the Secretary of State for Health to involve the voluntary sector in the provision of talking therapies in line with the governments wish to improve the access of talking therapies for depression and anxiety, problems which many people with drug and alcohol addictions also suffer.

The aim of the proposal is to create a 'level playing field' which allows voluntary organisation's to compete for IAPT funded contracts on even terms. At present the health service funding is ring fenced and the Secretary of State has already committed to providing over £70 million over the next year for the continuation of IAPT services. However the report points out that less than 5% of the funding is going to voluntary sector providers.

In a time of big cuts and changing priorities in line with the government's focus it is something we would encourage members to be aware of. Thus it might be worth the consideration of ensuring that therapists meet the CBT qualifications required by IAPT to increase the chances of joining forces with the mental health sector and provide partnership working.

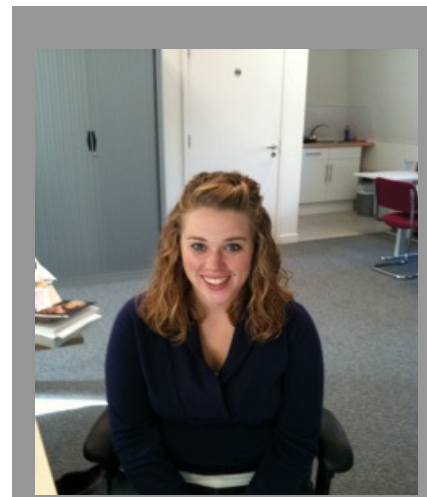
An example of such work is demonstrated by Turning Points Right Steps scheme which offers the IAPT delivery modal which is an outcome focused service delivering open access mental health provision and case management. Members should refer to the following website for more info on this proposal and further info on the IAPT website.

<http://www.iapt.nhs.uk/>

Members' Highlights

The Addiction Recovery Foundation has organised Interventionist training on 15-17 Oct in London. It is recognised by the Association of Intervention Specialists. Participants will have the opportunity to discuss the establishment of an international arm of AIS, for which this training is the inaugural step; and to put their names forward as founder members. It is worth knowing that a the books: '*Love First: A New Approach to Intervention* and *No More Letting Go* by Debra Jay should be read prior to the training. Please see the link below for further details and booking info.

www.addictiontoday.org/addictiontoday/2010/08/interventionist-training-for-ais-bri-1.html



eATA are pleased to announce that Lindsay Yates will be working with eATA over the next few months as a volunteer intern

eATA e-bulletin

OCTOBER 2010

And Finally...

- **Training;**

Edexcel and City and Guilds, the awarding bodies for the Awards and Certificates in Substance Misuse have agreed to extend these qualifications until 31 December 2013.

In light of this extension and the fact that policy changes are taking place, it has also been agreed that a review of the qualifications will take place next year (exact dates are to be confirmed) with a view to having revised and possibly new qualifications available in 2012. For more info please contact tina.parker@skillsforjustice.com

- **Tendering Opportunities;**

- Milton Keynes Drug and Alcohol Misuse Service are inviting expressions of interest in provision of adult alcohol and drug services from 1st April 2011 – March 2014. To attend briefing day / further info please contact MKSubstanceMisuse.Tender@glhdhse.com

-Tameside Crime and Disorder Reduction Partnership tender for provision of a tier 2 drug service commencing 10 December 2010. See www.tameside.gov.uk or email kim.greeves@tameside.gov.uk



eATA e-bulletin

The monthly e-bulletin from the European Association for the Treatment of Addiction (eATA) to keep our members up to date on the latest developments and news in the drug and alcohol treatment and aftercare sector. If you have any comments or questions about our articles, don't hesitate to get in touch.

ph 0207 820 8130
fx 0207 820 0055
e louise.walsh@eata.org.uk